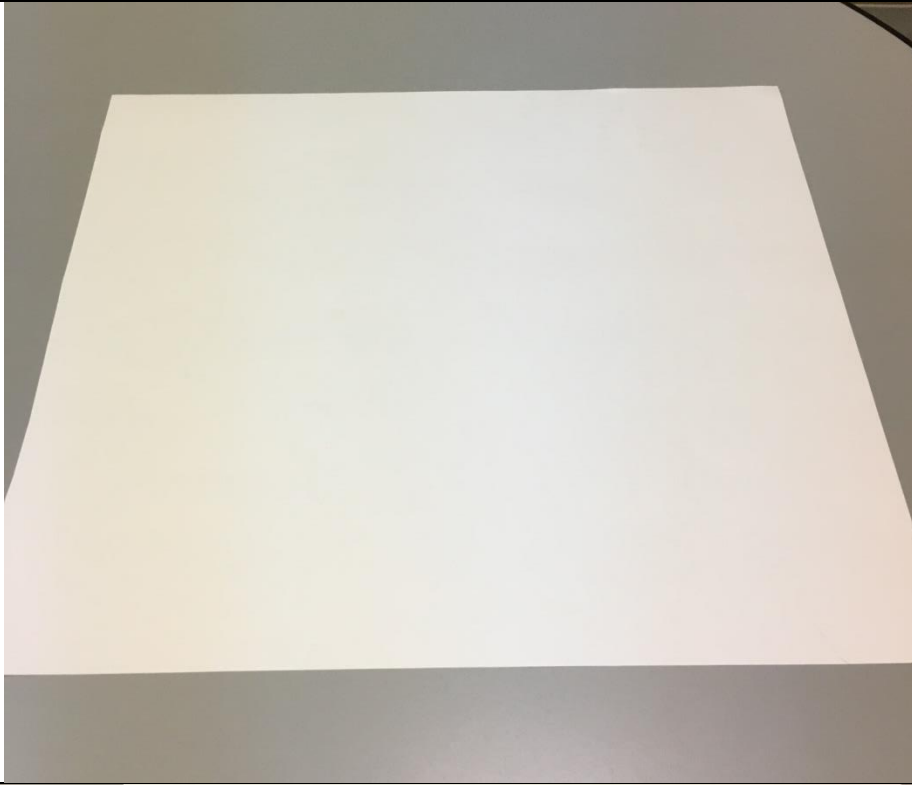
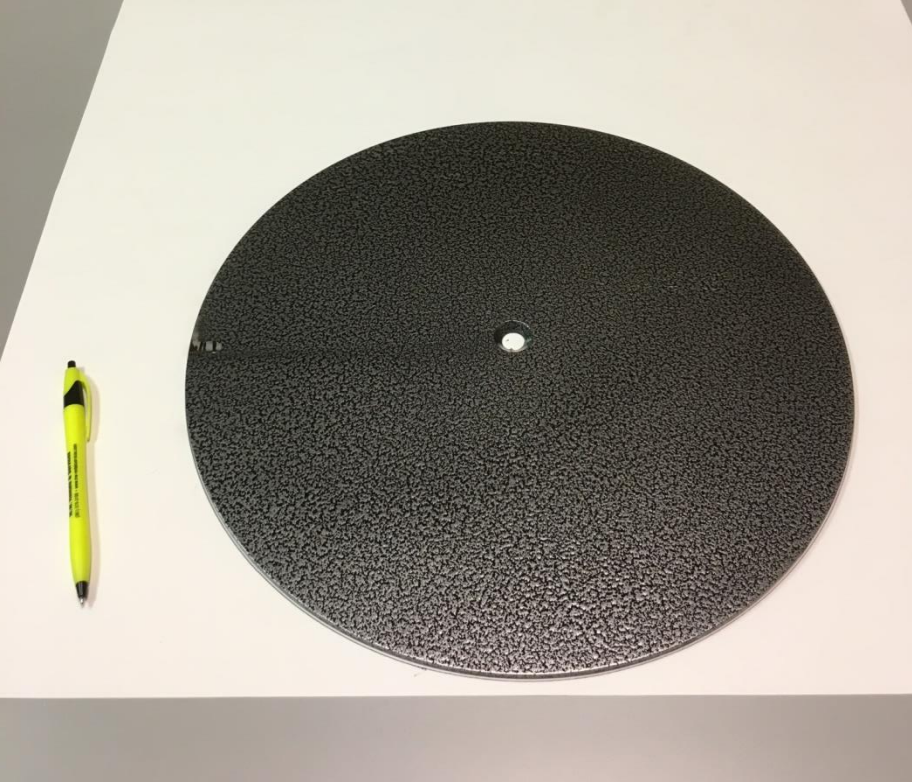


PRE-DRILLING SIGN BASE INSTRUCTIONS

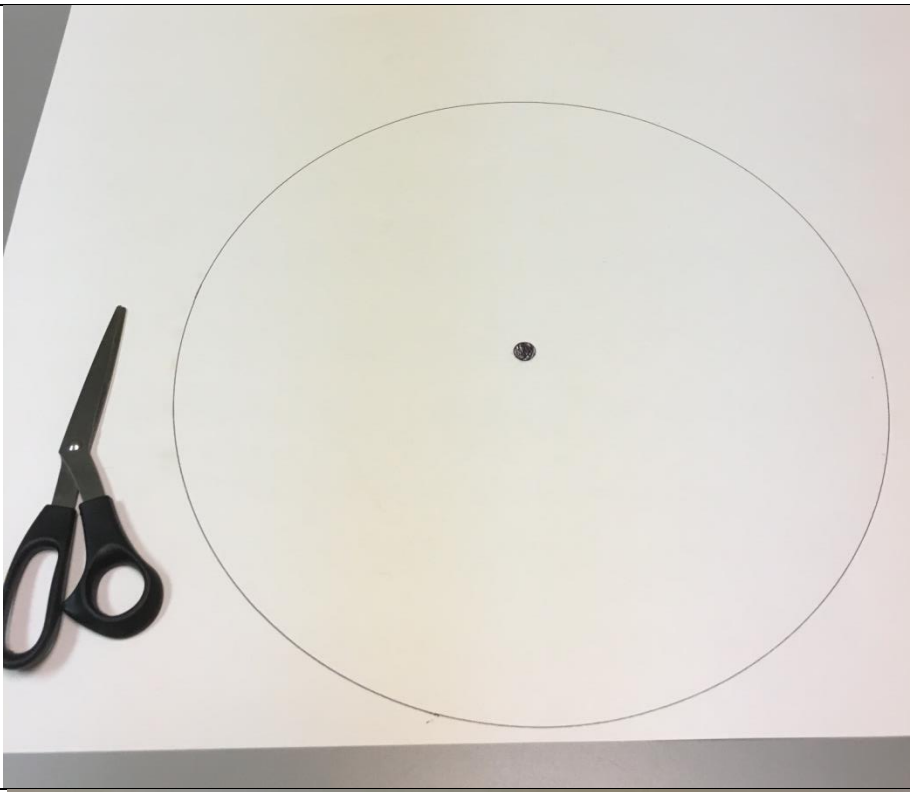


Use a sturdy piece of poster board that is bigger than the base.



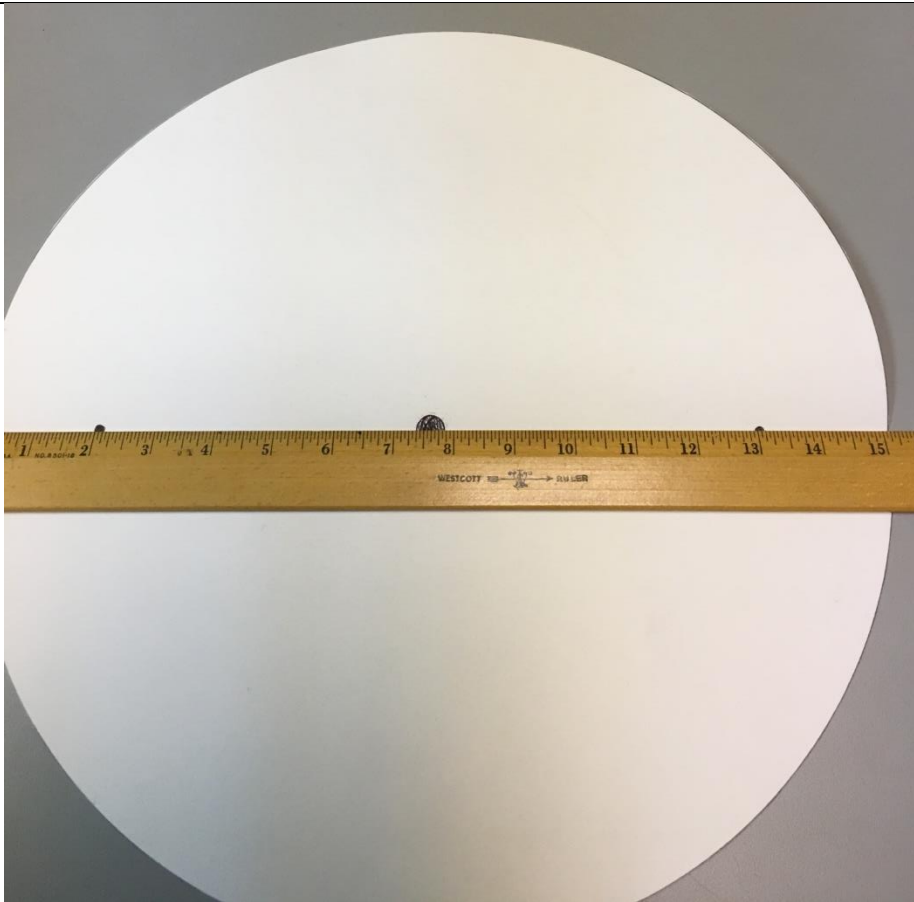
Place the base on the poster board and trace the base.

Cut out the circle.

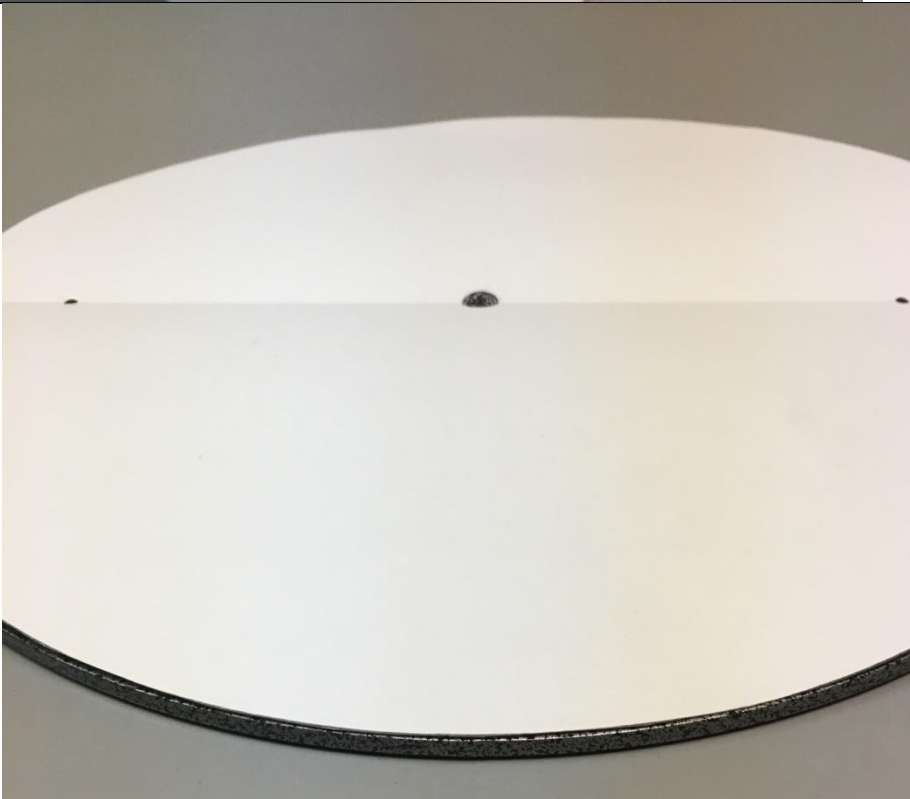


Fold the circle in half.





Unfold and use a ruler or measuring tape along the folded line. Place small circles 2" in from the edge.



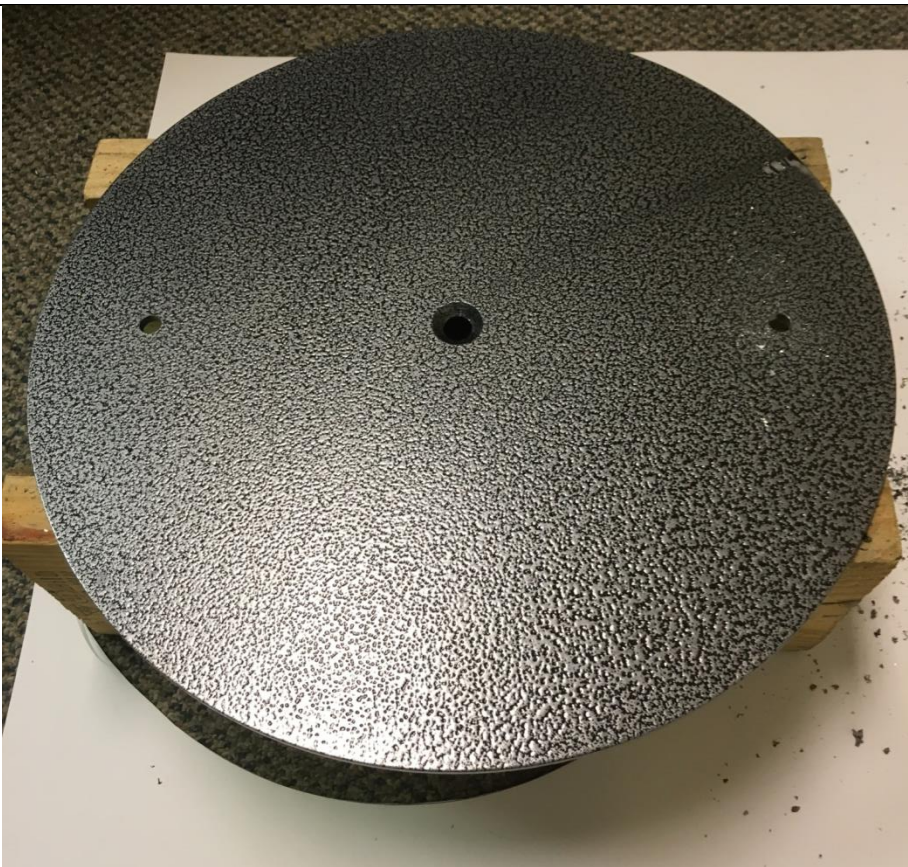
Place the circle on the base to make sure sizing is correct.



Build a small structure using 2x6 studs as shown in the picture to give you room for the drill.



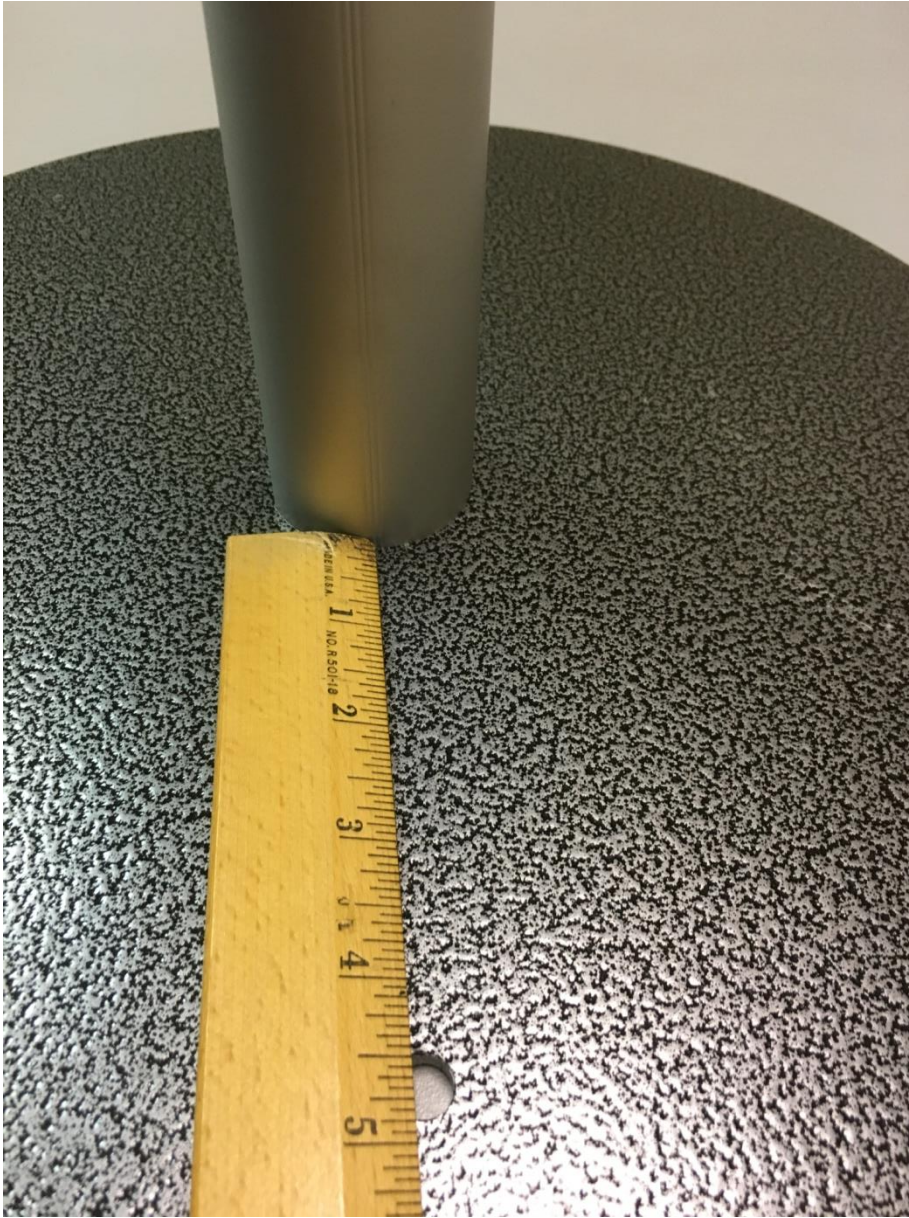
Place base and pattern on wood structure. You can use your foot to hold pattern in place. Drill both marked circles.



Finished base.



Place base on pole, be sure the holes are perpendicular to where the horizontal bar will be. It's easier if someone can hold pole and base while the other lines up the screw and tightens.



Be sure before the final turns of the screw, you have lined up the predrilled holes with the line on the pole. The predrilled holes should be perpendicular to the bottom horizontal bar of the sign holder.



Finished install with bolts
perpendicular to sign holder.